

These color chips represent shades of Integral Colors based on 94 lbs. gray Type I-II Portland cement with 4" slump. Use this chart as a guideline only. The colors may not exactly represent the final color. Shade variations of cement and aggregate plus variations in the volume of water, the addition of admixtures and other additives may have an effect on the design mix and final color. We recommend that a test slab be poured and approved prior to the start of the job.



1% loading

2% loading

3% loading

4% loading



306 Canvas



306 Toffee



306 Burlap



306 Cinnamon



238 Thyme



238 Doeskin



238 Buttercup



238 Marigold



338 Earthen



338 Rawhide



338 Buckskin



338 Leather



385 Taupe



385 Lava



385 Buffalo



385 Bark



242 Sandstone



242 Sahara



242 Sandalwood



242 Nutmeg



492 Mauve



492 Merlot



492 Lilac



492 Garnet



467 Ash



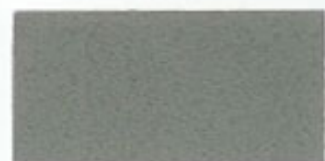
467 Oyster



467 Orchid



467 Rustique



920 Slate



920 Smoke



920 Charcoal



920 Onyx

